

**eDimensional, Inc.**  
Powered by **Sengital Ltd.**



**eDimensional, Inc.**  
411 7th St Suite 6, West Palm Beach,  
FL 33401 USA - Tel: 561.833.2199  
[www.eDimensional.com](http://www.eDimensional.com)



**G-Pad Pro**  
**Gyroscopic**  
**Gamepad**  
for **PC games**  
**User Guide**



eDimensional 2006 - All rights reserved.



## Table of Contents

<<

### Section 1

1.0 Introduction .....	3
1.1 What is Included .....	3
1.2 System Requirements .....	3
1.3 G-Pad Pro features .....	4

### Section 2

2.0 Getting Started .....	5
2.1 Quick Start .....	5
2.2 Step 1: Install VRMS Driver .....	5
2.3 Step 2: Connecting to PC .....	5
2.4 Step 3: Configure your own Settings .....	6
2.5 Step 4: Start your Games .....	6

### Section 3

3.0 Hardware Description .....	7
3.1 G-Pad Pro Feature Descriptions .....	7

### Section 4

4.0 Driver Installation .....	9
4.1 G-Pad Pro Driver Installation .....	9

### Section 5

5.0 User Configuration for Win2000/WinNT/WinXP Programmable Driver .....	12
5.1 G-Pad Pro User Configuration .....	12
5.2 General Setting .....	12
5.3 Button Settings .....	14
5.4 Direction Pad and Motion Function .....	14
5.5 Profile Settings .....	15

### Section 6

6.0 Using the G-Pad Pro Gyroscopic Gamepad .....	16
6.1 How to Use G-Pad Pro .....	16
6.2 Motion-Based Control .....	16

### Section 7

7.0 Additional user information .....	17
---------------------------------------	----



## Section 1

### 1.0 Introduction

Thank you for your purchase of the G-Pad Pro Gyroscopic Gamepad. G-Pad Pro Gyroscopic Gamepad is a programmable motion-based game controller which allows users to play games using hand and body motion.

This user manual is to provide users with an easy way to start playing games using the G-Pad Pro Gyroscopic Gamepad.

### 1.1 What is included

#### Package contents:

- G-Pad Pro Gyroscopic Gamepad
- Installation CD including:
  - Win98SE/WinME installer\*
  - Win2000/WinXP installer\*\*
- User Manual



### 1.2 System requirements

#### The minimum hardware and software requirements are:

- Windows 98SE/ME/2000/XP or later
- USB 1.1 compatible



### G-Pad Pro Gyroscopic Gamepad Features

### 1.3

#### New Technology -- VRMS

- VRMS (Virtual Reality Motion Sensing) is a next generation technology for interactive gaming.
- In addition to the traditional button control, VRMS adds multi-directional motion control to the gamepad.
- Users rotate the gamepad on 2 axis to generate 4 extra commands.
- This feature enables 3-dimensional motion tracking of game subject(s) on the screen

#### Programmable

- The VRMS programmable driver allows users to set, save, and load custom settings.
- PC gamers typically play using the keyboard and/or mouse. Now, VRMS technology empowers you to use ONE peripheral -- both mouse and keyboard functions are accessible on one controller

#### Intuitive, Responsive Gameplay.

- VRMS adds realism by making gameplay intuitive.
- Rotation/Tilt input uses instinctive motion to decrease player fatigue while allowing casual users to perform more advanced moves.

#### Multi-functional

- G-Pad Pro Gyroscopic Gamepad performs all the functions of a traditional gamepad, mouse, keyboard, and joystick. It creates less clutter, adds a new dimension of motion input, decreases hand and body fatigue... all while improving performance.
- Dual motors provide realistic vibration feedback.
- One input device can be used for any genre of game - racing, shooting, sports, flight simulation, RPGs and more...!



## Section 2

### 2.0 Getting Started

This section will help you get started with the G-Pad Pro Gyroscopic Gamepad.

### 2.1 Quick Start

There are only 4 simple steps to let you to enjoy the game using G-Pad Pro Gyroscopic Gamepad:

- Step 1: Connect to the PC
- Step 2: Install VRMS Driver
- Step 3: Configure your own settings
- Step 4: Start your games

### 2.2 Step 1: connecting to PS2

Connect your G-Pad Pro Gyroscopic Gamepad to any available PC USB port.



### 2.3 Step 2: Install VRMS Driver

- 1. Insert the VRMS driver CD into your CDROM drive.
- 2. Follow the instructions to install the VRMS Force Feedback Driver and the VRMS Programmable GUI. (You will need to restart your PC.)

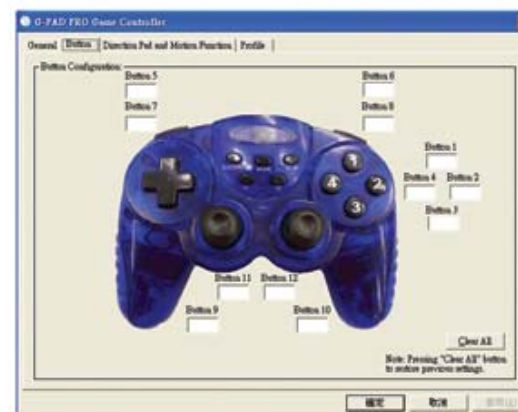


1. Double click the VRMS driver icon in the system tray. (Bottom right corner of Window XP platform next to system clock.)

VRMS Driver



2. Set/change and save your settings in the VRMS driver GUI.



Start a game of your choice and start using G-Pad Pro Gyroscopic Gamepad to control the on-screen action.

**Step 3:** 2.4  
Configure your own settings

**Step 4:** 2.5  
Start your games

## Section 3

### 3.0 Hardware description

This section will introduce you to the hardware components and functions of the G-Pad Pro Gyroscopic Gamepad.

### 3.1 G-Pad Pro Gyroscopic Gamepad Function Descriptions

#### Normal function:



- Directional keypad (8 directional keys e.g. up, down, left and right).
- 2 sensitivity adjustment buttons.
- 12 standard action buttons.
- 1 button with LED to switch between the motion sensing function and the analog stick.

#### Motion Sensing Function:



By tilting the x and y axis, you can have 4 extra function inputs.

#### Special keys:



- Calibration: [ Hold 2 and press MODE ] During the calibration process, the gamepad should be placed parallel with, or in line with the ground.
- Force Feedback ON/OFF switch: [ Hold 1 and press MODE ] Enables the force feedback feature in hardware.
- Motion Sensing Sensitivity: [ S-UP and S-DOWN ] There are 3 sensitivity levels: Low, Normal and High. S-UP is used to increase the sensitivity level, and S-DOWN is used to decrease the sensitivity level. Default sensitivity level is Normal.
- "Motion Sensing function" and "left Analog Stick function" switch: [ Press MODE ] When the red light is on, the motion sensing function is on. When the red light is off, only the left Analog Stick is active.



## Section 4

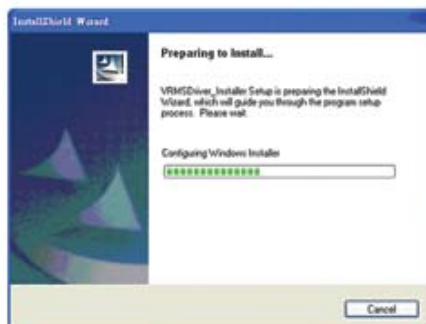
### 4.0 Driver Installation

This section will guide you through installation of the G-Pad Pro Gyroscopic Gamepad software. The GUI will allow you to configure and customize the functions you want.

### 4.1 G-Pad Pro Gyroscopic Gamepad Driver Installation

**Step 1:** Insert the VRMS Driver CD in your CDROM.

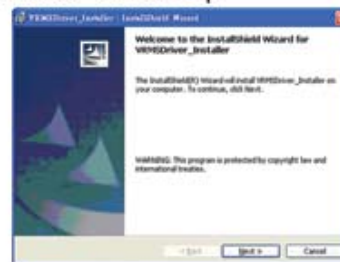
Then your PC will auto run the setup.exe for installation.



or you can double click the setup.exe icon to execute the installation:



**Step 2:** Click "Next" to next step.



**Step 3:** Click "Install" to start installation.



**Step 4:** Driver will be installed automatically.

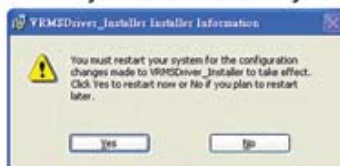




**Step 5:** Click "Finish".



**Step 6:** A dialog box will be shown to ask you to restart your system. Click "Yes" if you want to restart your system.



**Step 7:** After restarting the system, you can now start your game and start using the VRMS gamepad.

Note: The Win98SE/WinME driver can enable the force feedback function and the Win2000/WinNT/WinXP driver can enable the force feedback and programmable function.



## Section 5

User Configuration for Win2000/WinNT/WinXP Programmable Driver 5.0

User Configuration for G-Pad Pro Gyroscopic Gamepad 5.1

General Setting 5.2

This section will guide you through configuration, saving/loading the setting profiles, and adjusting the sensitivity of the G-Pad Pro Gyroscopic Gamepad.

Four configuration settings are available:

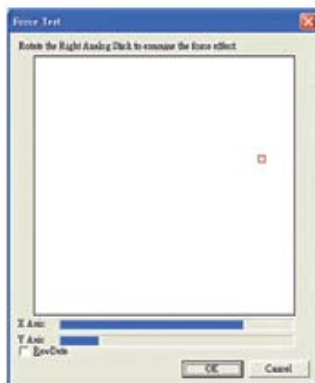
1. General Settings
2. Button Settings
3. Direction Pad and Motion Function
4. Profile Settings



- [VRMS JoyPad Driver] > [Device window]
  - Select the controller (highlighted in blue color).
  - Press "Config" to activate the controller.
- [VRMS JoyPad Driver] > [Calibration]
  - Calibrate the analog sticks.



- **[Key Sensitivity Option]**
  - Choose desired keystroke pattern.
- **[Mouse Function Setting]**
  - Click "Mouse Enable" to activate the mouse function.
  - Adjust the Mouse Sensitivity.
- **[Dual Shock]**
  - Click "Dual Shock Enable" to enable the vibration feedback.
  - Adjust the Force Limit.
- **[Dual Shock]>[Test]**
  - Click "Dual Shock Enable", and "Test".
  - Move right analog stick to test the force feedback function.



### Button Setting 5.3



- Each button can be individually configured (mouse, keyboard, gamepad or joystick functions.)
- Click on the edit box and press the mouse button, movement, or keyboard buttons.
- Press "Clear All" button to clear all settings and start over.
- After finishing adjusting settings, press "Apply."

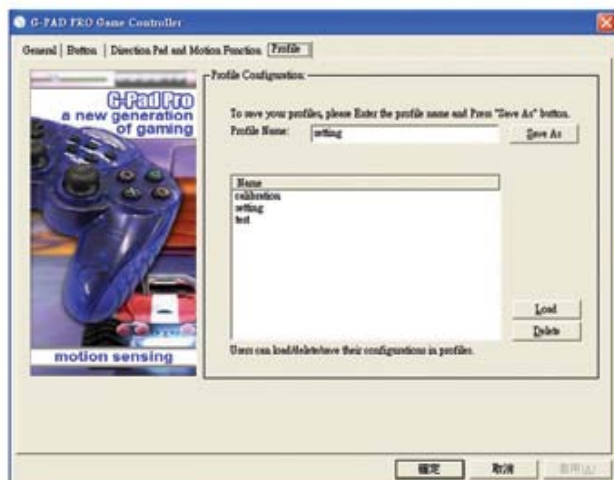


### Direction Pad and Motion Function 5.4

- In the directional pad section (left side), users can configure the 4 directional key functions.
- In the motion sensing section (right side), users can configure the functions for movement directions.
- Click on the edit box and press the mouse button, movement, or keyboard button you wish to bind to that control.
- "Clear All" button clears all settings.
- After setting your preferences, press "Apply".



## 5.5 Profile Setting



- The user configuration can be saved and retrieved at a later time. "Save As," "Load," and "Delete" functions are provided.
- [Save] Type the new profile name in the text box after Profile Name and then press "Save As" button.
- [Profile] Select the profile in the profile list and then press the "Load" or "Delete" button to load profile or delete profile.



## Section 6

### Using the G-Pad Pro Gyroscopic Gamepad

6.0

### How to Use G-Pad Pro Gyroscopic Gamepad

6.1

This section will demonstrate how to use the G-Pad Pro Gyroscopic Gamepad to play virtually any type of game.

You can use the G-Pad Pro Gyroscopic Gamepad as a normal controller or with these added features:

- 1) It can be programmed to use functions from your mouse, keyboard, Gamepad, and/or joystick.
- 2) Motion-based control.

To use the motion-based control, switch on the motion sensing switch and hold controller as shown below:



### Motion-Based Control

6.2

By using different physical motions and custom user configuration, the motion and action buttons can be converted to game commands (including mouse, keyboard, gamepad and joystick functions.)



## Section 7

### 7.0 Additional User Informations

This manual helps you properly start using the G-Pad Pro Gyroscopic Gamepad. Please refer to the complete user guide for detailed product instructions and information.

Do not physically open the device for any reason. Warranty is invalid if the G-Pad Pro is opened. Do not try to make any changes or repairs to the G-Pad Pro yourself. If you have a product question, please consult the user guide or eDimensional technical support.

Handle the G-Pad Pro with care. Dropping or hitting the device can cause damage to the product.

#### ATTENTION

Do not use the G-Pad Pro differently than what is described in the user guide. Improper use of the product may invalidate the product warranty. eDimensional is not responsible for damages resulting from the improper use of the product.

The manufacturer reserves the right to modify the technical features described in this manual.

